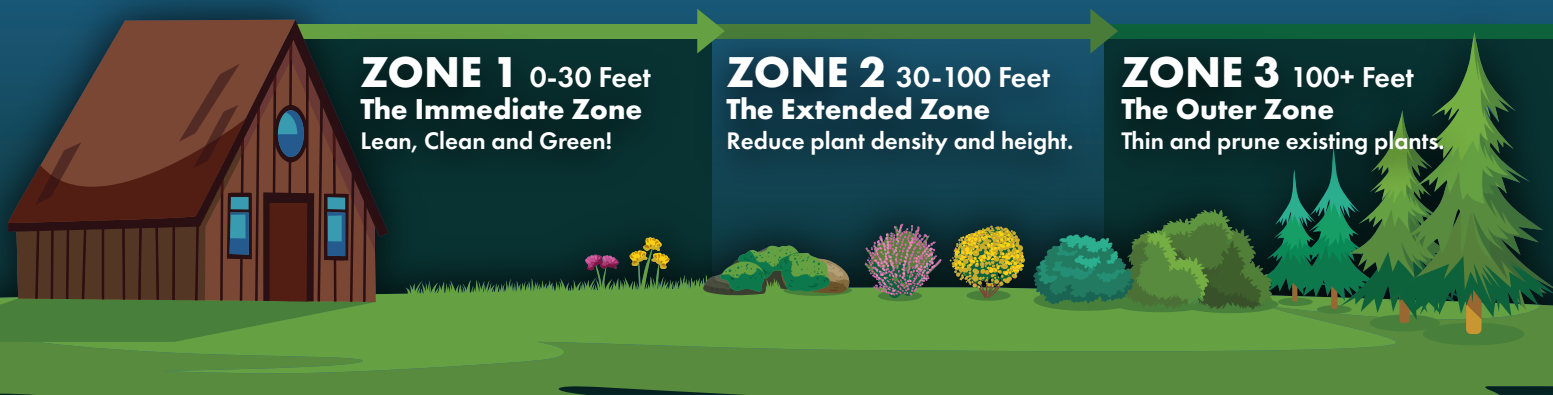


WILDFIRES ARE A PART OF LIFE IN MONTANA ARE YOU FIRE WISE?



Fire wise is the ability to live safely in fire-prone areas. Taking action before a wildfire occurs using fire resistant landscaping, maintaining a safe home ignition zone, and having an evacuation plan to help keep you and your family safer.

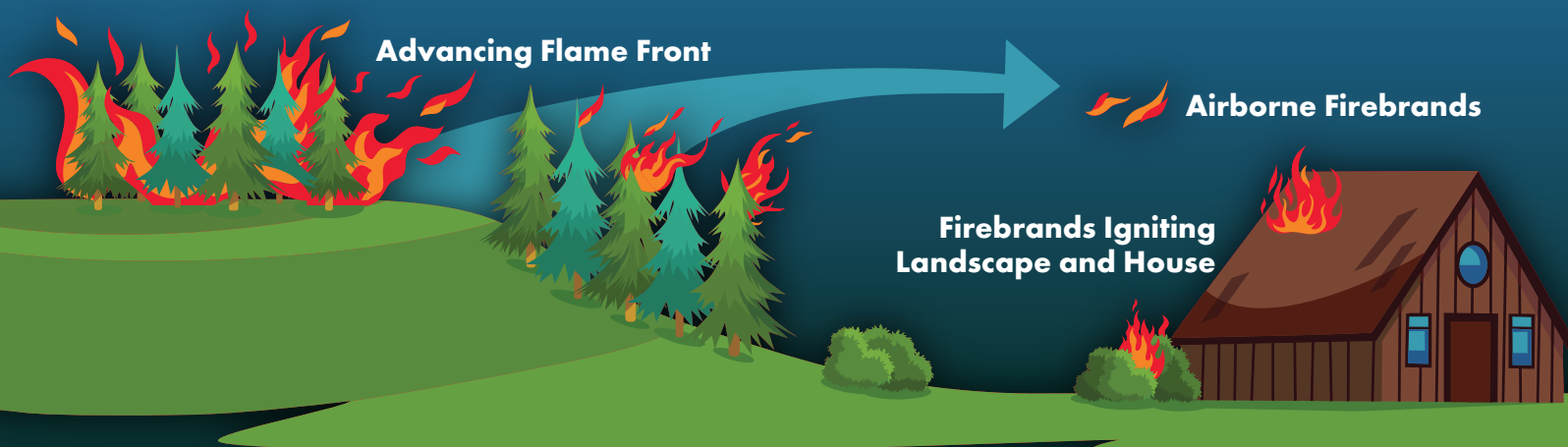
Reducing and spacing fuels (trees, vegetation, and debris) can keep a wildfire on the ground near homes, where it is less likely to ignite structures. The home ignition zones are defined as the distance from a home, with specific types of landscaping recommendations.



Is Your Property at Risk? **BE PREPARED**

Determining your wildfire risk is the first step in living safer in a wildfire environment. Tri County Fire Safe Working Group (TCFSWG) offers free wildfire risk assessments to help homeowners evaluate their property's exposure to ignition from wildfire. Identifying and understanding the risks and what can be done to reduce them, is the first step in taking personal responsibility. Financial cost-share assistance for mitigation projects is also available.

Fire has shaped Montana's landscape for centuries and continues to play a role today. Why does this matter to you? Embers can be transported by wind and ignite homes a mile or more away from the active flame front. If an ember lands on a house, on mulch beneath a window, or enters an attic through a vent, it can ignite, setting the house on fire.



FIRE WISE PRACTICES **FOR HOMES**

- Clean roofs and gutters
- Cover vents, soffits, and other openings with 1/8" metal screening
- Clear debris around your house, deck and stairways
- Replace wooden roofs, siding and decks with ignition resistant material
- Install double pane and aluminum clad windows
- Replace or relocate wooden fences

FIRE WISE PRACTICES **FOR YOU**

- Make an evacuation plan
- Know who to call
- Know how you will leave and where you will go
- Plan for pets and livestock
- Make an emergency kit
- Insurance preparedness

ADDITIONAL RESOURCES

Visit TCFSWG.ORG for information on hazardous fuel mitigation, property owner assistance, property wildfire risk assesment, planning, outreach and education. You will also find resources on how you can prepare for wildfire by hardening your home, creating a defensible space, and having an evacuation plan.



FIRE WISE LANDSCAPING

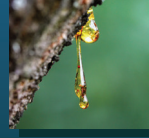
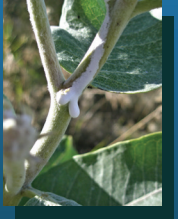
FIRE RESISTANT & ATTRACTIVE

Fire wise landscaping may be the make-or-break factor in protecting your home during a wildfire. Not only is this landscaping attractive and fire resistant, but it can also be drought tolerant, deer resistant, and thrive in this geographical area.

An effective landscape design includes well-spaced plants with low-flammability characteristics, surrounded by a non-flammable material like stone mulch.

FIRE WISE PLANTS:

- Have a higher moisture content during summer
- Have little seasonal buildup of dead vegetation
- Are high in soap, pectin, and/or latex
- Have a low, compact growth form
- Are low in volatile oils and resins
- Are drought tolerant

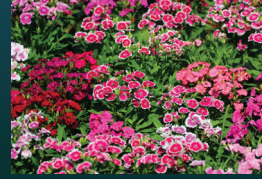


LOW GROUNDCOVER



Ice plant (Delosperma)

SOAP IN LEAVES



Sweet William (Dianthus)

HIGH IN PECTIN



Snowberry (Symphoricarpos)

KEEP IT LEAN & GREEN

- Choose plants that use less water
- Choose plants that are naturally smaller in size
- Keep grasses well-watered and mowed
- Remove dead branches and weeds, thin trees, and prune perennials
- Choose plants that do not drop a lot of flammable material

TCFSWG has developed a database of over 80 plant species that:



- #1 Have an individual fire wise rating
- #2 Grow in our area
- #3 Are readily available in most nurseries



PLANT THIS, NOT THAT!



These plants have a similar appearance, but quite different responses to wildfire.



Fineline Buckthorn
(*Rhamnus frangula*)
Low flammability



Arborvitae
(*Thuja occidentalis*)
High flammability



Sumac
Low flammability



Creeping Juniper
High flammability



Cinquefoil (Potentilla)
Low flammability



Lavender
High flammability
Volatile oils



Buffaloberry
Low flammability



Mugo Pine
High flammability



Tri-County Firesafe Working Group's (TCFSWG) mission is to engage property owners on how to co-exist with and survive wildfire in the tri-county of Helena, MT. The MT City fire wise garden is just one example of TCFSWG's efforts to demonstrate methods to reduce risks to the home ignition zone. A special thanks to Jefferson County, the MT Department of Resources & Conservation, and the MT City Fire Department for their support in this project. For a complete listing of partners and donors, please visit www.tcfswg.org. Wildfire is here to stay, but with proper mitigation, awareness, and planning, living with wildfire can become much easier and safer!